

Understand - Formative Assessment

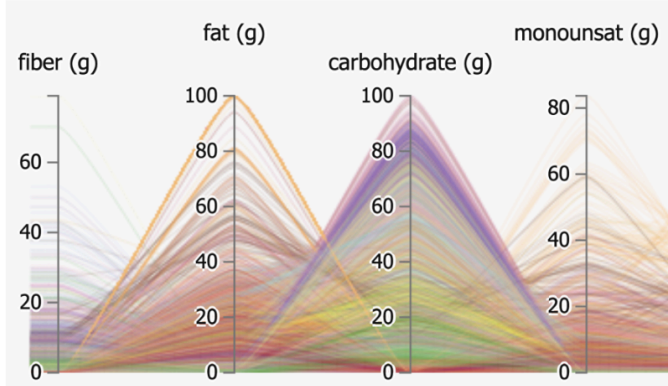
Note: You must score above 80% to qualify for the Summative Assessment.

.....

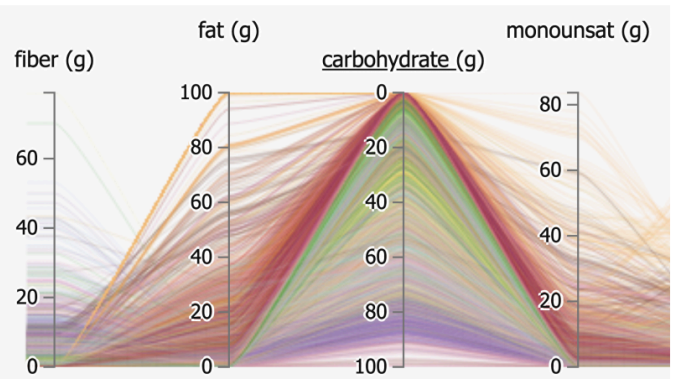
Question 1:

What would you say is the difference between the following two charts (a) and (b)?

(a)



(b)

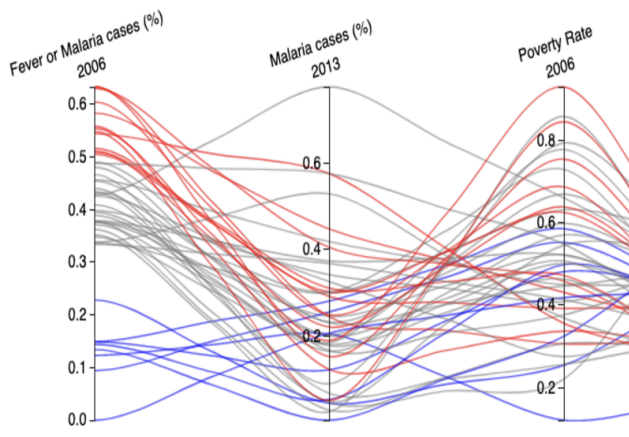


- ☐ They both look the same
- ☐ The carbohydrate(g) axis is flipped
- ☐ The fat(g) axis is flipped

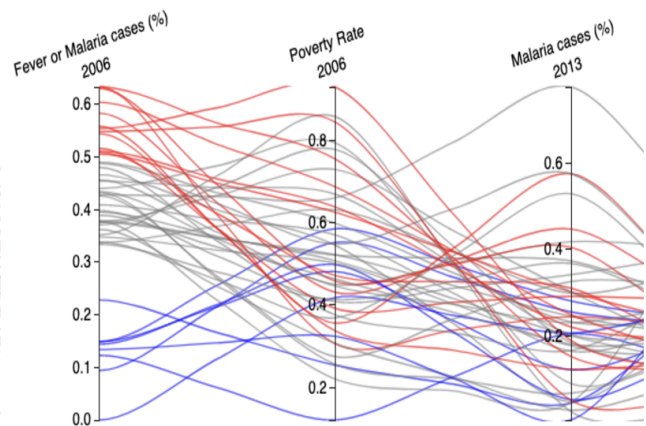
Question 2:

What would you say is the difference between the following two charts (a) and (b)?

(a)



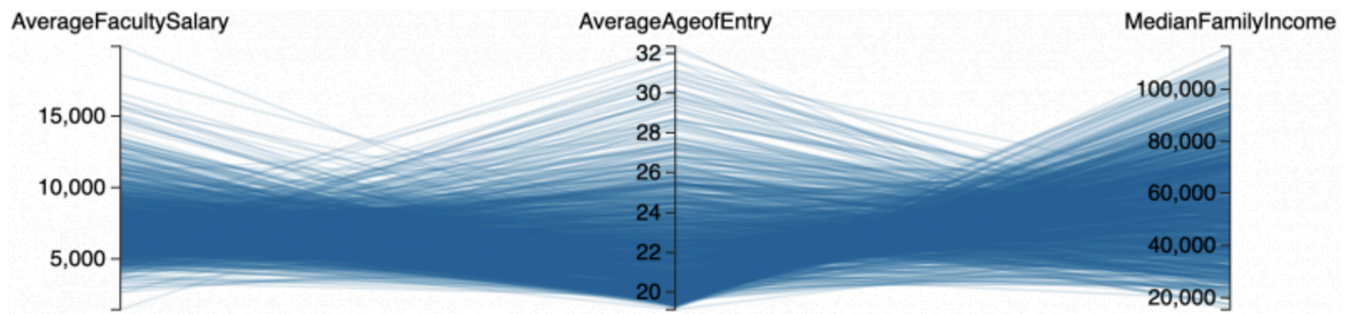
(b)



- ☐ They both look the same
- ☐ The Malaria cases (%) and the Poverty Rate axes have been reordered
- ☐ The Fever or Malaria cases (%) and Poverty Rate Axes have been reordered

Question 3:

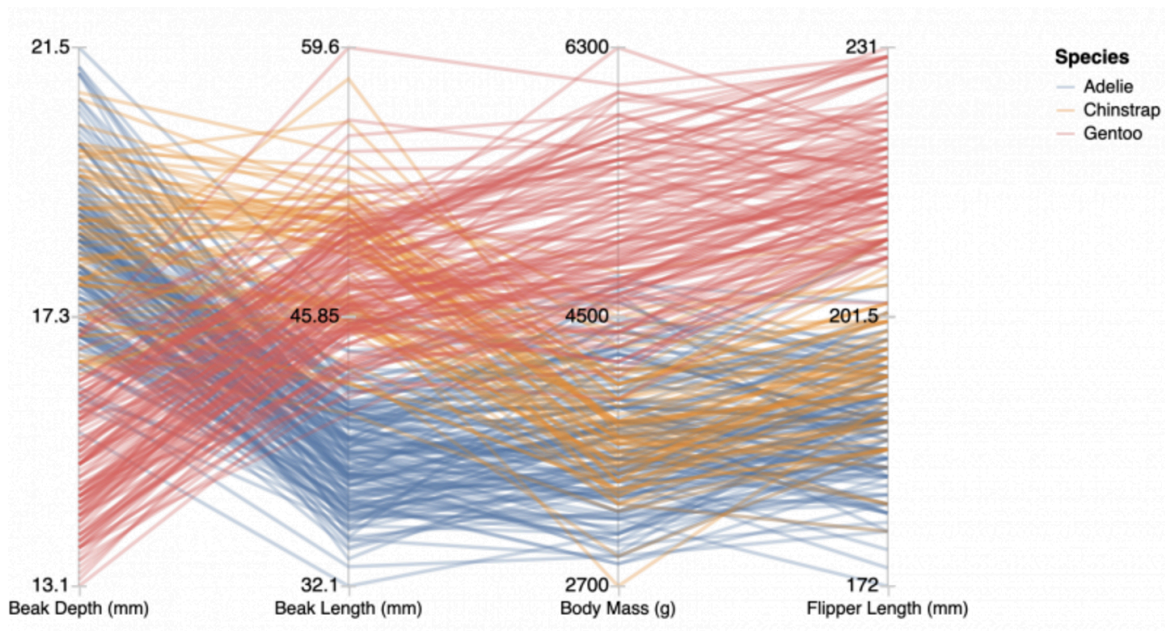
For the following parallel coordinates plot, which axis ranges from **18-32**?



- ☐ AverageCost
- ☐ AverageFacultySalary
- ☐ AverageAgeofEntry
- ☐ MedianFamilyIncome

Question 4:

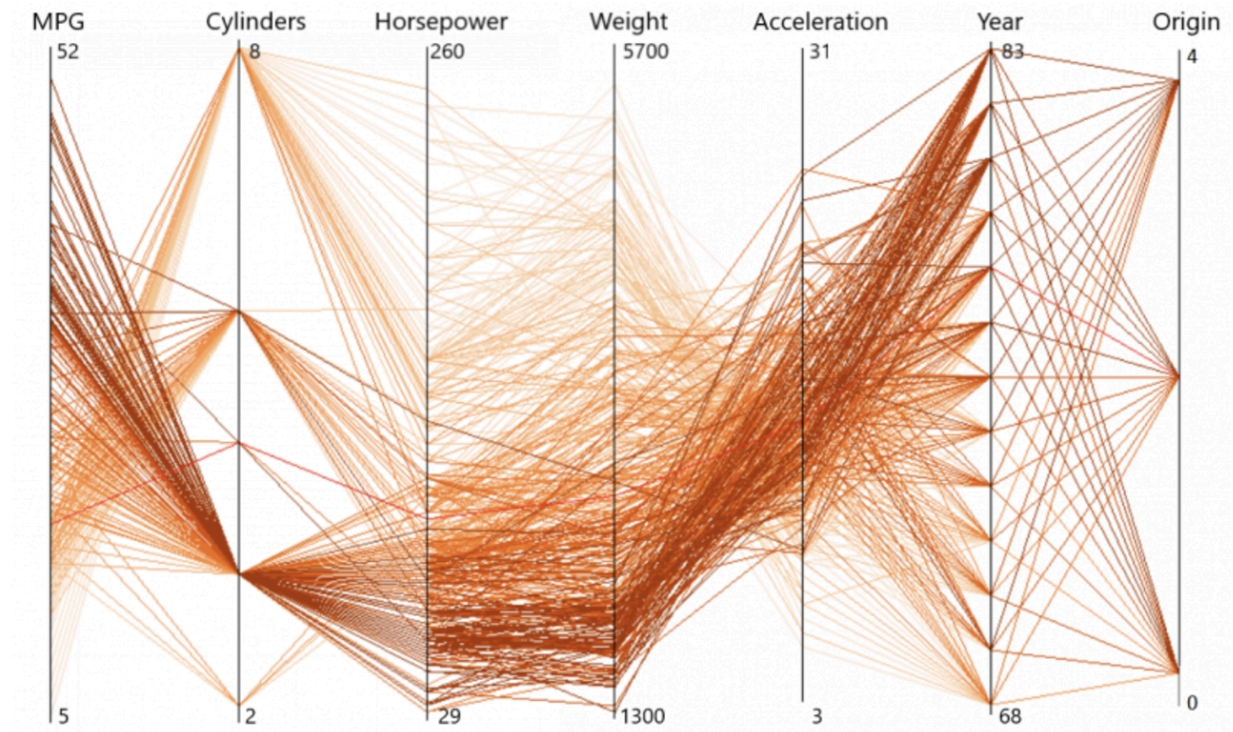
What are the **minimum** and **maximum** values of the "**Beak Length**" attribute in the dataset shown using a parallel coordinates chart below?



- ☐ 2700 and 6300
- ☐ 32.1 and 59.6
- ☐ 13.1 and 21.5
- ☐ 172 and 231
- ☐ 32 and 58

Question 5:

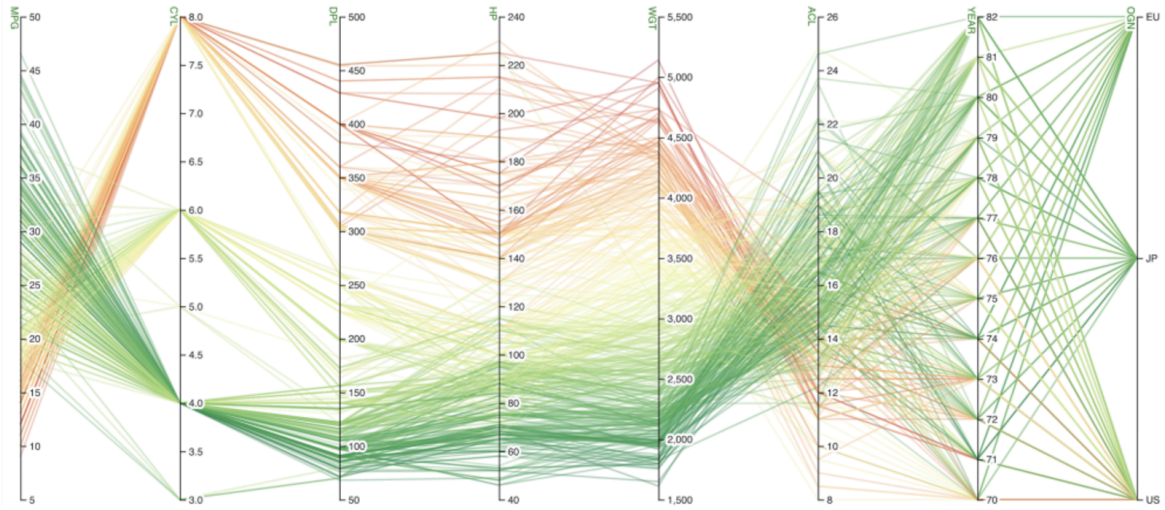
For the following parallel coordinates plot, which axis ranges from **1300-5700**?



- ☐ MPG
- ☐ Acceleration
- ☐ Year
- ☐ Weight

Question 6:

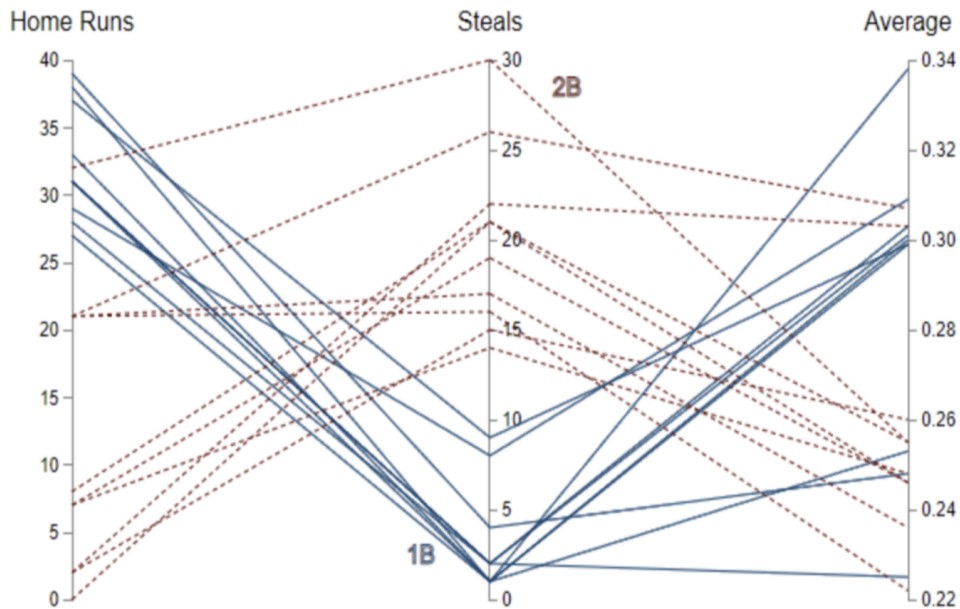
What are the **minimum** and **maximum** values of the "HP" attribute in the dataset shown using a parallel coordinates chart below?



- ☐ 3.0 and 8.0
- ☐ 10 and 8.0
- ☐ 450 and 50
- ☐ 40 and 240

Question 7:

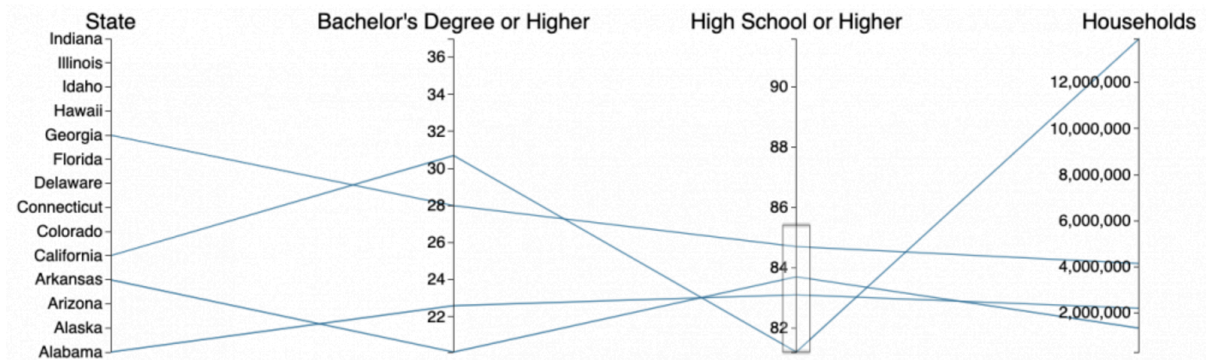
What are the **minimum** and **maximum** values of the "Average" attribute in the dataset shown using a parallel coordinates chart below?



- ☐ 0.23 and 0.34
- ☐ 0.22 and 0.34
- ☐ 0.225 and 0.33
- ☐ 0 and 40

Question 8:

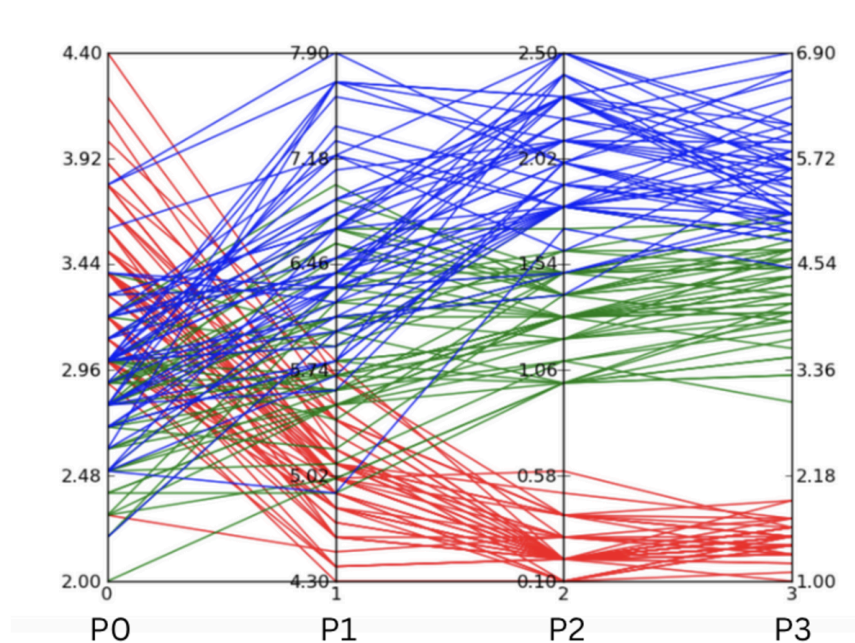
Which state has one of the lowest education levels for **High School or Higher** and has one of the highest value for number of households in the state?



- ☐ Indiana
- ☐ California
- ☐ Delaware
- ☐ Alaska

Question 9:

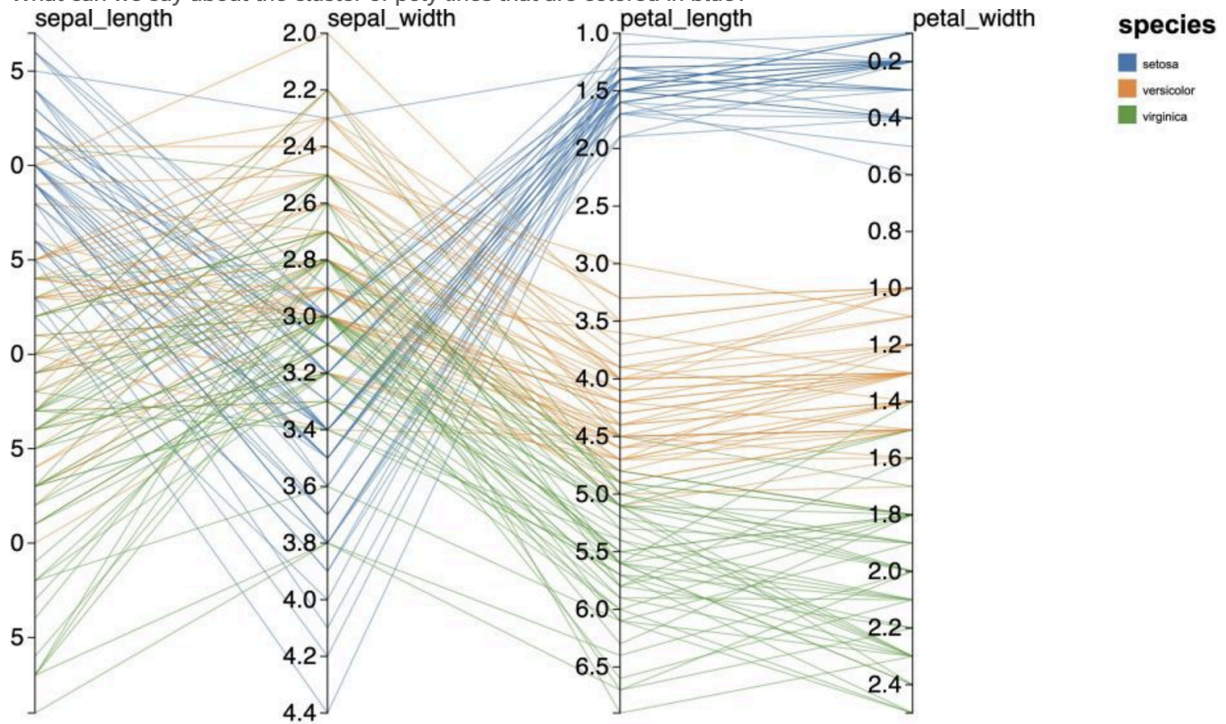
Following the cluster of **blue lines**, what is its average on the **P1** axis?



- ☐ 4.30
- ☐ 5.74
- ☐ 6.46
- ☐ 7.18

Question 10:

What can we say about the cluster of poly lines that are colored in blue?



- ☐ Their petal width is high compared to the petal widths for the orange and green lines
- ☐ Their petal width is average compared to the petal widths for the orange and green lines
- ☐ Their petal width is low compared to the petal widths for the orange and green lines
- ☐ None of the above